

Total area: approx. 81.8 sq. metres (880.2 sq. feet)



1 Turnberry Court, Wellingborough, NN8 5UE

£270,000

**GREAT LOCATION !** Welcome to this pleasant three-bedroom detached house located in the popular Gleneagles development within Wellingborough. This property is well presented throughout and we believe its a well priced family home for it's location.

Benefits include: spacious lounge/diner, ground floor WC, UPVC double glazing, gas radiator central heating, small cul-de-sac location, modern kitchen and bathroom, 3 well proportioned bedrooms and good floor coverings and interior decor throughout.

To the front is a driveway in front of a single garage and an open plan lawn garden. To the rear is an enclosed which is mainly laid to lawn with a patio area and rear access door into the garage.

For those with vehicles, the property boasts off-road parking for up to two vehicles, along with a garage, ensuring that parking is never a concern. This is a significant advantage in today's busy world.

Overall, this detached family home represents great value for money and the location and positioning is rather nice, to top it off its offered for sale with no upward chain

CALL HAWKSbYS NOW TO ARRANGE YOUR VIEWING 01933 22 44 44

Council Tax Band D, EPC rating - 69/C



Entrance Hall  
 Ground Floor WC  
 5'3 x 2'6  
 Kitchen  
 10'5 x 9'7  
 Lounge/Diner  
 17'3 x 14'4 max  
 Landing  
 Bedroom 1  
 12'1 x 10'9 max

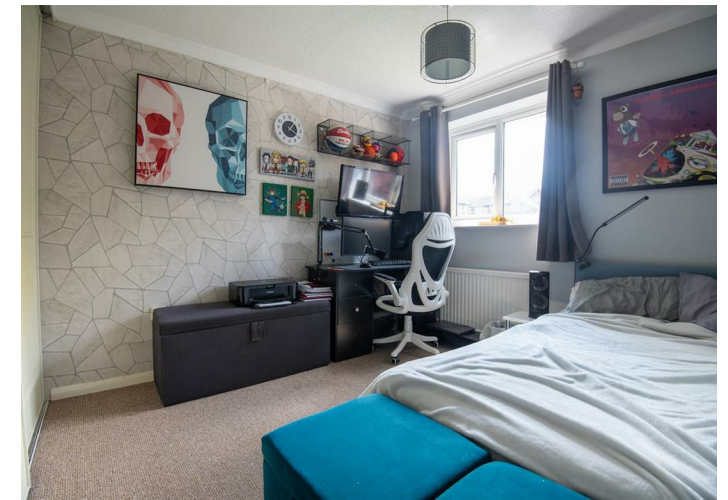


Bedroom 2  
 11'7 x 8'6  
 Bedroom 3  
 8'3 x 7'4  
 Bathroom  
 6'6 x 6'5



Tenure: Freehold  
 Council Tax Band: C

Viewing strictly by  
 appointment with  
 Hawksbys on 01933  
 224444



Agents Note: Hawksbys have not tested any apparatus, equipment, fitting or services and so cannot verify they are in working order. The Buyer is advised to obtain verification from their Solicitor or Surveyor.  
 Internal Photographs: If photographs are included showing the interior of a property, these are to show the layout, and purchasers should check to confirm whether any appliances are included in the purchase price.  
 Offer Procedure: To make an offer you will need to make an appointment with our Financial Advisor to be able to process your offer in the best possible light.  
 Floor Plans: The plans included in these details are provided for guidance purposes only to show the general layout of the property, they are in some instances NOT to scale.

Buying a house can be complex and stressful. We try very hard to make the transaction as smooth and as trouble free as possible for buyers by guiding them through the process at every stage, including helping them with their mortgage arrangements.

**YOUR HOME IS AT RISK IF YOU DO NOT KEEP UP REPAYMENTS ON A MORTGAGE OR ANY OTHER LOANS SECURED ON IT.**  
 Life Assurance usually required.

**AGENTS NOTE: THE ICON ON THE MAP REPRESENTING THE PROPERTY DOES NOT SHOW IT'S EXACT POSITION IN RELATION TO THE ROAD OR CUL-DE-SAC.**

Some of the photographs are taken with an extreme wide lens, as as 18mm, and in some circumstances make the rooms look larger than they are!

